



# GO-4 Parking Enforcement Vehicle

## Smart Parking Enforcement on the Go



- *LPR integration ready*
- *Reduce traffic interruption*
- *Dual sided entry/exit*
- *Sustainable EV option*

# The Right Vehicle for the Job

**The GO-4 is the only task specific vehicle on the market designed specifically for parking enforcement.** It has a small automotive footprint, while providing features and functions to keep your parking operations moving efficiently and safely. With the latest in License Plate Reader (LPR) and chalking technologies integrated into the design, the GO-4 is a small but mighty powerhouse that drives an increase in revenue for your department and sustainability goals for your city.

**We have multiple models designed to meet your needs and budget:**

- **GO-4 Gas** - 3-wheels (new and improved!)
- **GO-4 EV** - 3-wheels
- **MAXX™ EV** - 4-wheels (new LSV coming late 2019)

All vehicles come with the standard outfit and you have the option of upgrading to a fully-loaded vehicle, including comfort amenities, additional bed space for hauling cones and equipment, and integrated parking enforcement technologies. We customize our vehicles based on your operational needs, which can vary from location to location.



GO-4 Gas - 3-wheels



GO-4 EV - 3-wheels

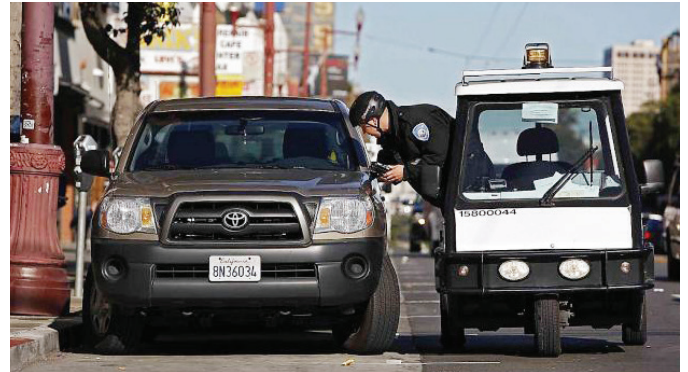


**new LSV coming late 2019**  
(also available with white exterior)

MAXX™ EV - 4-wheels

# GO-4 Delivers Results

**At Westward Industries (WWI), our aim is to understand what matters most to our customers and deliver on our promises. The GO-4 has evolved to meet your operational needs and we will continue to not only adapt to the ever-changing city environment, but plan to continue to lead the industry with smart enforcement vehicle technology that will propel your operations into the future.**



## Technology and LPR

Technology is driving the pace of change in the parking industry and Westward Industries has taken the lead in developing smart parking enforcement vehicles with officers and cities in mind. Today's GO-4 vehicle, designed for parking enforcement, is the first to integrate license plate readers into the vehicles during manufacturing while allowing the systems to be transferable to outfitted GO-4's in the fleet.

With LPR cameras mounted on the GO-4, operators can optimize their routes and become more efficient at covering many types of parking zones throughout a city. As each plate is read, user-friendly in-vehicle software shows plate and vehicle images and time stamps, which can be used as supportive evidence in case of disputes. Wheel images and/or full vehicle images can be recorded for additional proof against citation appeals.

Our capabilities are endless given we design and manufacture vehicles in-house at our centrally located North American facility in Winnipeg, Manitoba Canada.

## Improving Efficiencies

The GO-4 is the ONLY street legal vehicle on the market designed specifically for parking enforcement accessibility. Hop in, hop out, hop up with state-of-the-art suspension and easy glide doors, officers increase ticketing rates in a vehicle designed for repetitive entry and exit on or off curbs.

Our dual-entry vehicles allow parking enforcement officers to easily transition from both sides of the vehicle, while leaving a small footprint in traffic lanes. The vehicle's doors can remain open while driving permitting the operator easy access while navigating.



Fuel efficiency is unparalleled in the GO-4 and with fuel mileage up to 45mpg, our EV model can travel up to 100 miles without a charge and reduces your agency's carbon footprint.





*Efficiency =  
More Enforcement =  
More Revenue*



## Safety First

Street lanes were not designed to allow for traffic flow and a vehicle enforcing parking. The GO-4 was designed and manufactured at the request of the City of New York in 1990 to create a vehicle that allowed officers to safely operate in congested streets.

The GO-4 was designed not only to keep officers out of harms way while entering and exiting the vehicle, our built-tough roll bar steel chassis has been proven to protect officers when accidents do happen. Vehicles have an optional rearview mirror inside the cab with a backup camera image and rear back up sensors that alarm as you approach a parked vehicle – offering additional safety to the driver.



## Dependability and Parts Portal

Our vehicles have a proven lifespan of up to 20 years. Unlike traditional passenger vehicles, the GO-4 was designed for short distance stop-and-go driver behavior. This means more time on the road and a better return on your investment.

Maintenance needs are minimal on the GO-4 and when there is a need for repair, our online parts portal allows dealers to quickly process and deliver parts. Most parts needed for repairs are available off-the-shelf and for operators that would prefer to leave repairs to the dealership, maintenance contracts are available at most locations.

# Proven in America's Finest Cities

“

The GO-4 is the most suitable parking enforcement vehicle operating today. It is the most maneuverable parking enforcement vehicle and affords the enforcement officer a high degree of safety and comfort. We have tested other vehicles but continue to return to the GO-4 as it provides the greatest overall return on investment.

~ Mark Lyons, Co-Chair International Parking Institute, CAPP; Parking Division General Manager City of Sarasota

”

We are trusted by parking operators and agencies of all sizes and in all climates. Westward Industries not only provides vehicles, but continued technical and customer support for customers in over 500 locations in the U.S. for almost 30 years.



## San Francisco, CA

**Population:** 884,363

**Customer Since:** 1995

**Vehicles Used:** 300 Gas GO-4, 2 EV GO-4  
– with chalking and some LPR integration

**Primary Use:** Parking Enforcement

**Major Challenge:** Severe traffic & density

**The Solution:** The GO-4 and GO-4 EV

With nearly 40,000 parking spaces to monitor, San Francisco Municipal Transit Agency (SFMTA) needed a vehicle that could withstand the high usage and short distance wear and tear impact that would typically limit their fleet's lifespan. SFMTA looked to Westward Industries to improve their parking enforcement department's efficiency while limiting their vehicle's footprint in very challenging terrain and severe traffic congestion - and has grown their GO-4 fleet over the last 24 years. Recently, the City has begun replacing units at the end of their life cycle, some aged 23 years – a testament to the durability of the vehicle.



## Aspen, CO

**Population:** 7,359

**Customer Since:** 1994

**Vehicles Used:** 3 Gas GO-4 – LPR integrated

**Primary Use:** Parking Enforcement

**Major Challenge:** Tourist season & space constraints

**The Solution:** The GO-4 with LPR install

The City of Aspen is known as a tourist hot spot in Colorado. The population influxes drastically during the winter months, increasing traffic congestion and parking management needs. Aspen needed a parking enforcement vehicle that delivered superior maneuverability to help meet their goals of decreasing congestion and improving efficiencies while enforcing their residential paid parking zones. The City of Aspen originally purchased GO-4 vehicles in 1994 and have relied on GO-4's as their primary enforcement vehicle through all weather conditions, including extreme wind and snow.



## Santa Monica, CA

**Population:** 92,306

**Customer Since:** 1993

**Vehicles Used:** 30 EV GO-4, 22 Gas GO-4

**Primary Use:** Parking Enforcement

**Major Challenge:** Operating a low emissions vehicle for severe usage in Parking Enforcement

**The Solution:** The GO-4 EV

The City of Santa Monica, an early adopter of the GO-4, has mixed density and terrain in just over 8 square miles. From a coastline full of tourists, to a dense city center and hilly suburbs, the City's demanding environment led them to test multiple vehicles for parking enforcement. In recent years, the GO-4 electric vehicle was tested in Santa Monica and passed all requirements for range and usage. Soon after, a total of 30 units were ordered and deployed. Now running in their fourth year, the units have proven to be reliable and dependable. The vehicles are under severe usage every day and continue to be workhorses for the department.

# Westward Industries - Where Quality and Innovation Merge

At Westward Industries we have a strong history of designing and manufacturing task specific vehicles for use in cities as large as New York City to as small as Fargo, North Dakota. Our dedication to excellence has taught us that we must create collaboratively – with our suppliers, technology partners, and you – our customers. Since our rebirth under new ownership in 2012 we've leveraged customer feedback to make improvements not only to our vehicles, but to our processes.

With over 4000 vehicles sold, we are one of the largest manufacturers of task specific vehicles in North America.

1990  Original Westward Industries creates small footprint vehicle on request from New York City


2016  Launch of online parts portal for dealers for easy ordering


2012  Purchase of Westward Industries by Franz Brothers

2016  Integration of LPR on GO-4 EV

2013  Launch production of new and improved drivetrain, increasing efficiency and reliability

2017  Increased dealer network, serving over 500 cities in the U.S.

2014  Internal quality control culture firmly established

2018  WWI launches the most nimble refuse hauler on the market, GO-4 XTR

2015  GO-4 EV, first electric task specific vehicle hits the market with 100 mile range

2019  New 4-wheel Low Speed Vehicle model launches in late 2019



Contact us today for a free demo.

Email: [sales@wwi-go4.com](mailto:sales@wwi-go4.com) or Call: 204-594-4100